

# HOSPITAL HEALTHCARE UPDATE REPORT

Presented to the JCC-ZSFG on March 27, 2018

By Susan Ehrlich, ZSFG Chief Executive Officer

## REPORT CONTENTS:

---

1. ZSFG CELEBRATES LUNAR NEW YEAR
2. SAN FRANCISCO HEALTH PLAN SURVEYS 6M PEDIATRIC CLINIC
3. ZSFG CELEBRATES PATIENT SAFETY AWARENESS WEEK
4. CALIFORNIA DEPARTMENT OF PUBLIC HEALTH (CDPH) CONDUCTS CMS RECERTIFICATION SURVEY FOR UNIT 4A SKILLED NURSING UNIT
5. ZSFG CELEBRATES BLACK HISTORY MONTH
6. PATIENT FLOW REPORT FOR FEBRUARY 2018
7. SALARY VARIANCE BUDGET REPORT

### 1 ZSFG CELEBRATES LUNAR NEW YEAR

---

On March 1st, ZSFG celebrated Lunar New Year in the main cafeteria. Lunar New Year is an important time celebrated at the turn of the traditional lunar calendar. The San Francisco Police Department Lion Dancing team provided attendees with a magnificent performance: the cafeteria became a lively place as three lions danced throughout the cafeteria to the beat of the drums and cymbals.

Many thanks to our Food and Nutrition staff for preparing a delicious Chinese banquet. Additionally, ZSFG thanks and acknowledges the ZSFG CHEARS committee for planning and supporting the event.

### 2 SAN FRANCISCO HEALTH PLAN SURVEYS 6M PEDIATRIC CLINIC

---

On February 28th, San Francisco Health Plan (SFHP), on behalf of CDPH, concluded its survey on the Children's Health Center (6M). SFHP staff surveyed the outside premises, the clinic environment, and completed an audit of 30 medical records. There were only two minor findings, and overall, the surveyors were impressed with the clinic and were complimentary of staff and providers.

Congratulations to the 6M team and the Department of Pediatrics on its successful survey, and thanks to our outstanding regulatory team for supporting them.

### 3 ZSFG CELEBRATES PATIENT SAFETY AWARENESS WEEK

---

During the week of March 12-17, ZSFG celebrated Patient Safety Awareness Week, which was sponsored by the Institute for Healthcare Improvement and The National Patient Safety Foundation. The week started off

with the 2017 Zero Hero Awards on Tuesday, followed by National Patient Safety Goal Roulette in the cafeteria on Wednesday and throughout the hospital on Thursday. There was also a bulletin board outside the cafeteria that showcased the ZERO in 2017 initiative. The team shared highlights with the organization on our accomplishments:

- (1) Zero Catheter-associated Urinary Tract Infections 1 out of 12 months
- (2) Zero Colon Surgical Site Infections for 3 out of 12 months
- (3) ZERO Hospital-Acquired Pressure Injury for 5 out of 12 months of 2017
- (4) Central Line-associated Bloodstream Infection was ZERO for 5 of the 12 months; and
- (5) Ventilator-associated Pneumonia was ZERO 7 of the 12 months
- (6) Reduced our falls with injury by 23%.

Many thanks to the ZSFG staff who worked tirelessly to ensure that ZSFG is a safe place for our patients!

## 4 CALIFORNIA DEPARTMENT OF PUBLIC HEALTH (CDPH) CONDUCTS CMS RECERTIFICATION SURVEY FOR UNIT 4A SKILLED NURSING UNIT

---

On March 14th, five surveyors from the California Department of Public Health (CDPH) arrived to conduct a week long CMS recertification survey for 4A Long Term Care distinct part Skilled Nursing Facility. During the visit, surveyors toured unit 4A and the kitchen. They also reviewed medical records, interviewed both residents and staff, and attended a resident council meeting. Overall, the surveyors were extremely complimentary of the 4A staff and of the care patients receive on the unit.

Many thanks to the 4A Team, as well as the Environmental Services, Dietary, and Facilities teams for ensuring that the survey went smoothly, and that we add only four minor findings.

## 5 ZSFG CELEBRATES BLACK HISTORY MONTH

---

In celebration of Black History Month, as part of ZSFG's Healing Arts Program, and to kick off the 2018 ZSFG Music Concert Series, musician Pat Wilder performed in the cafeteria on February 22nd. There was a large turnout and patients, staff and visitors dancing and enjoying the afternoon concert. Chef Mike and Food and Nutrition Services offered a 'Black History Month Culinary Experience' by serving a menu throughout the month of February.

On February 26, ZSFG celebrated Black History Month in the main cafeteria. It was a wonderful time to reflect and recognize the many contributions that African Americans have made throughout U.S. History. The organization celebrated by honoring the accomplishments of African Americans, while enjoying the wonderful soul food prepared by our Food and Nutrition staff. Many thanks to staff who planned the amazing event: Brenda Barros and Tosan Boyo.

## 6 PATIENT FLOW REPORT FOR FEBRUARY 2018

---

Attached please find a series of charts depicting changes in the average daily census.

### MEDICAL/SURGICAL

Average Daily Census was 233.25 which is 115% of budgeted staffed beds level and 93% of physical capacity of the hospital. 13.58% of the Medical/Surgical days were lower level of care days: 5.28% administrative and 8.30% decertified/non-reimbursed days.

### ACUTE PSYCHIATRY

Average Daily Census for Psychiatry beds, **excluding 7L**, was 38.89, which is 88.4% of budgeted staffed beds and 58% of physical capacity (7A, 7B, 7C). Average Daily Census for 7L was 4.71, which is 63% of budgeted staffed beds (n=7) and 39.3% of physical capacity (n=12). Latest Utilization Review data from the INVISION System shows 21% non-acute days (71.17% lower level of care and 7.99% non-reimbursed).

### 4A SKILLED NURSING UNIT

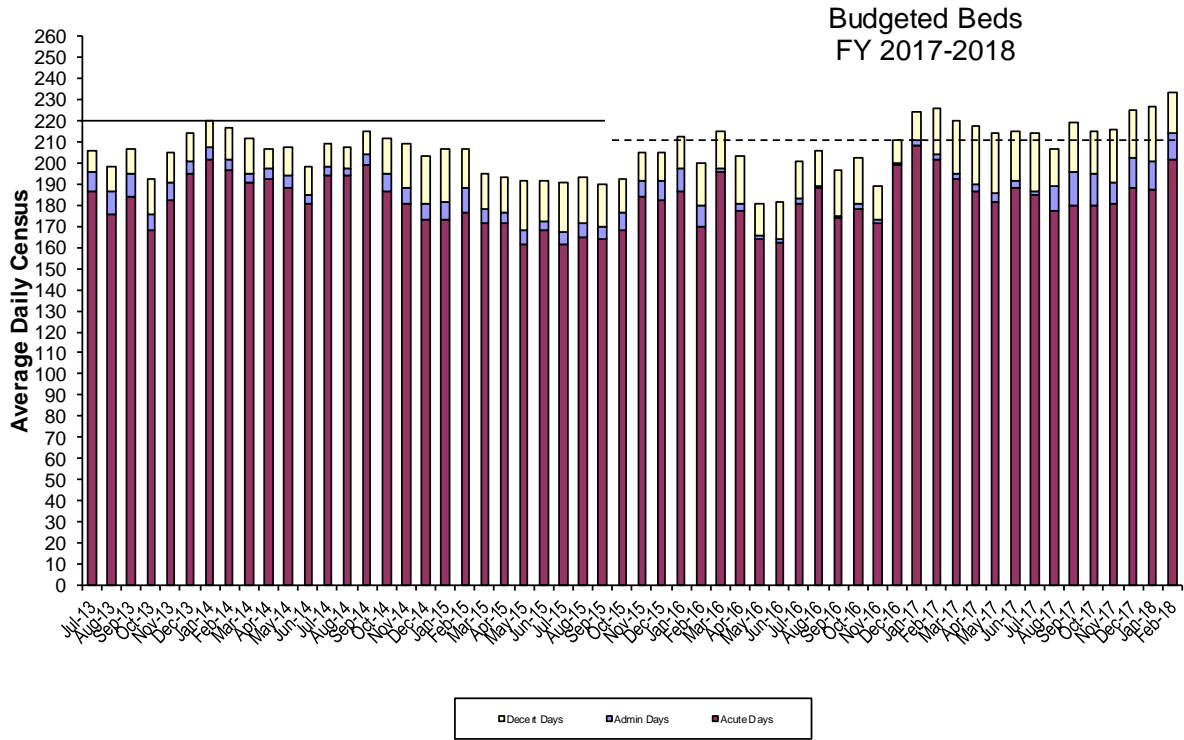
ADC for our skilled nursing unit was 28.8, which is 103% of our budgeted staffed beds and 96% of physical capacity.

## 7 SALARY VARIANCE TO BUDGET BY PAY PERIOD REPORT FOR FISCAL YEAR 2017-2018

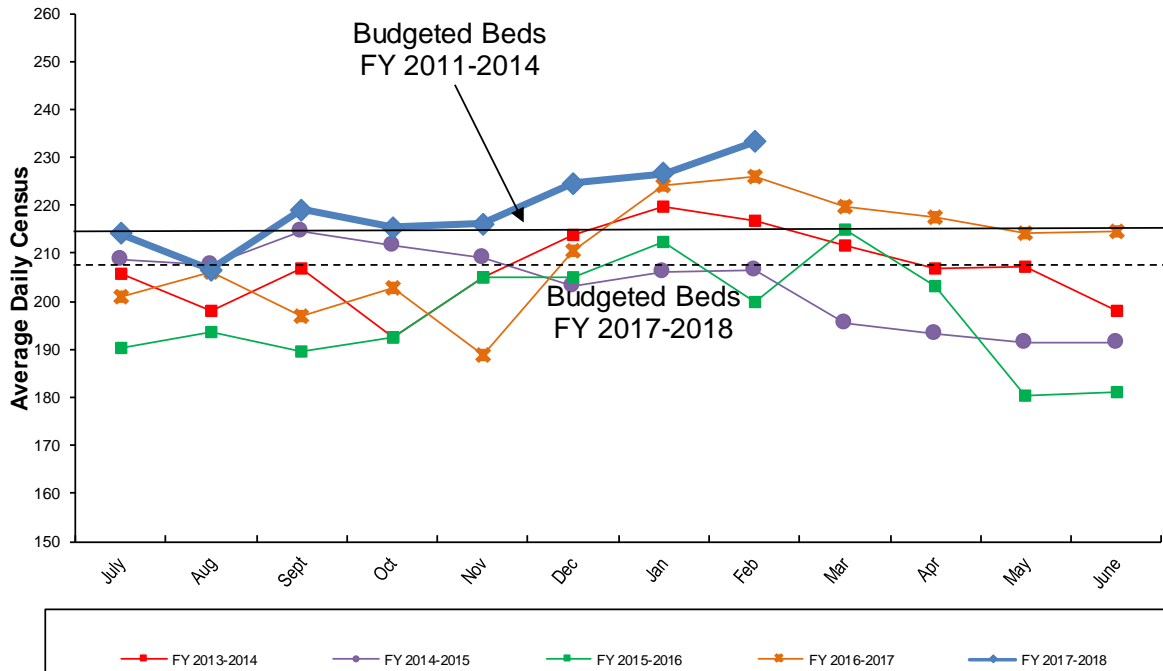
---

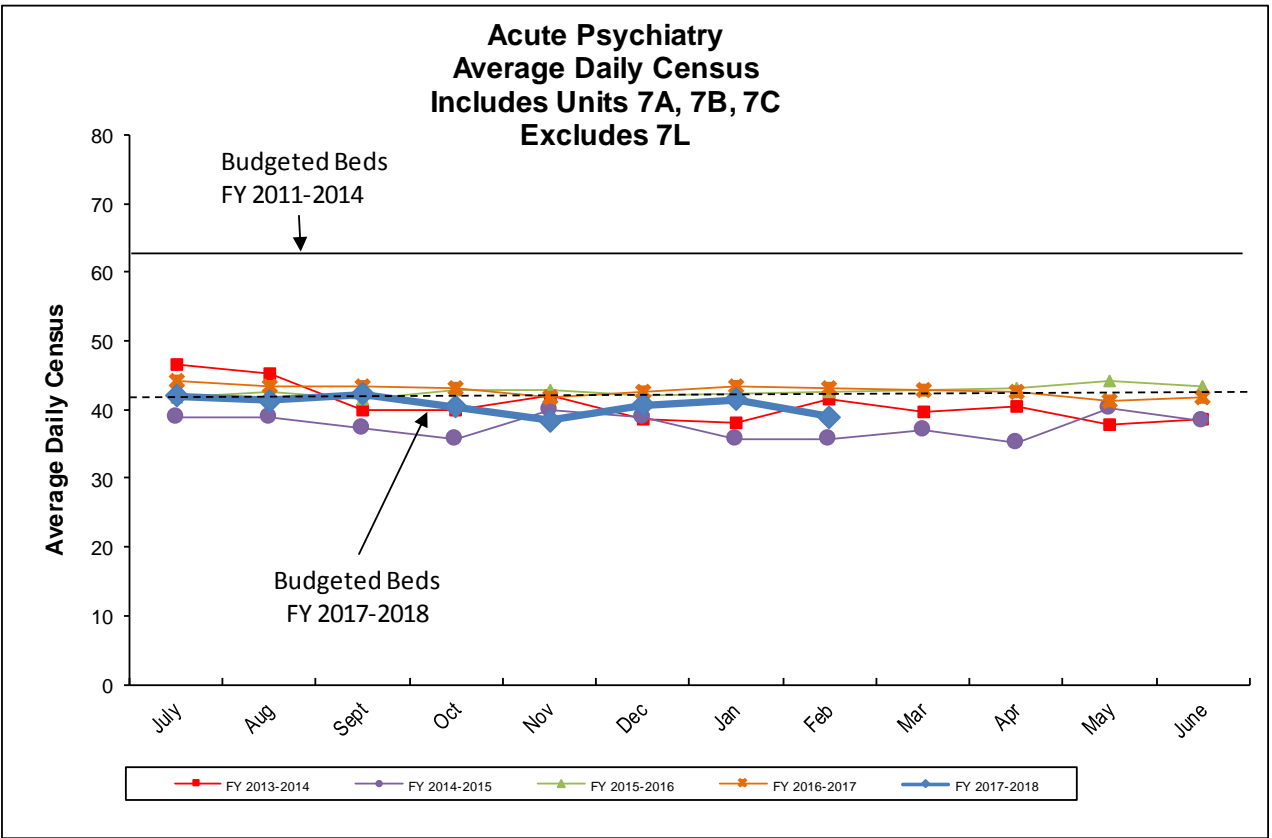
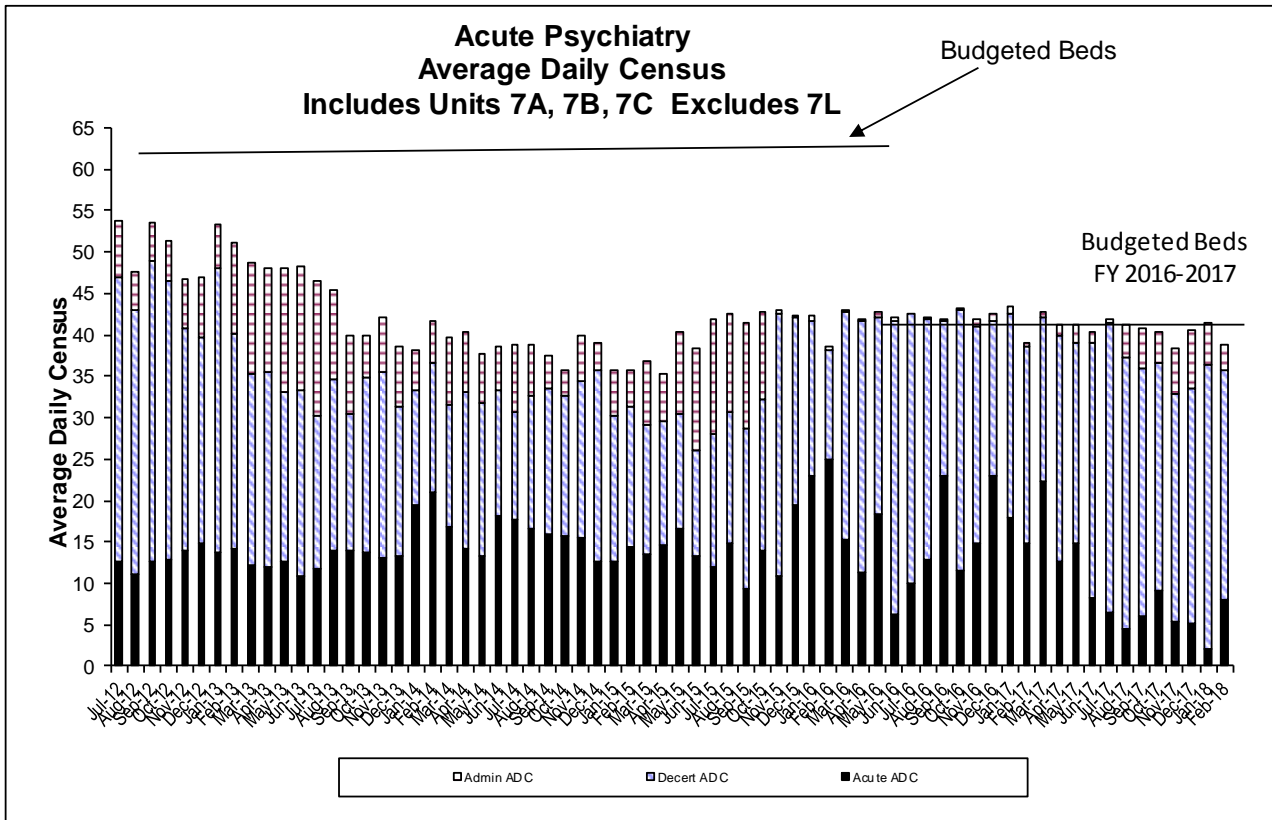
For Pay Period ending February 9, 2018, Zuckerberg San Francisco General recorded a 3.43% variance between Actual and Budgeted salary cost – actuals were \$481,900 over budget. For variance to budget year-to-date, ZSFG has a negative variance of \$ \$6,632,541/3.4%.

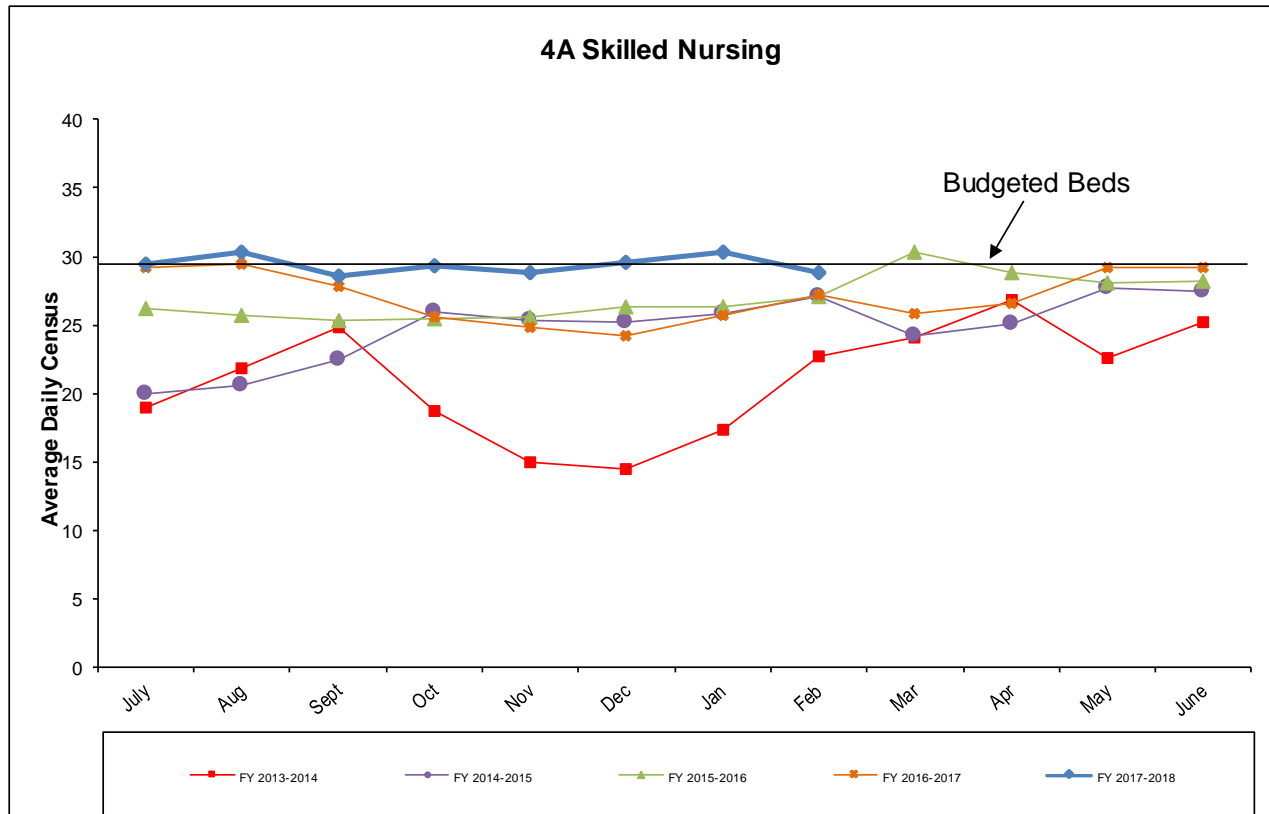
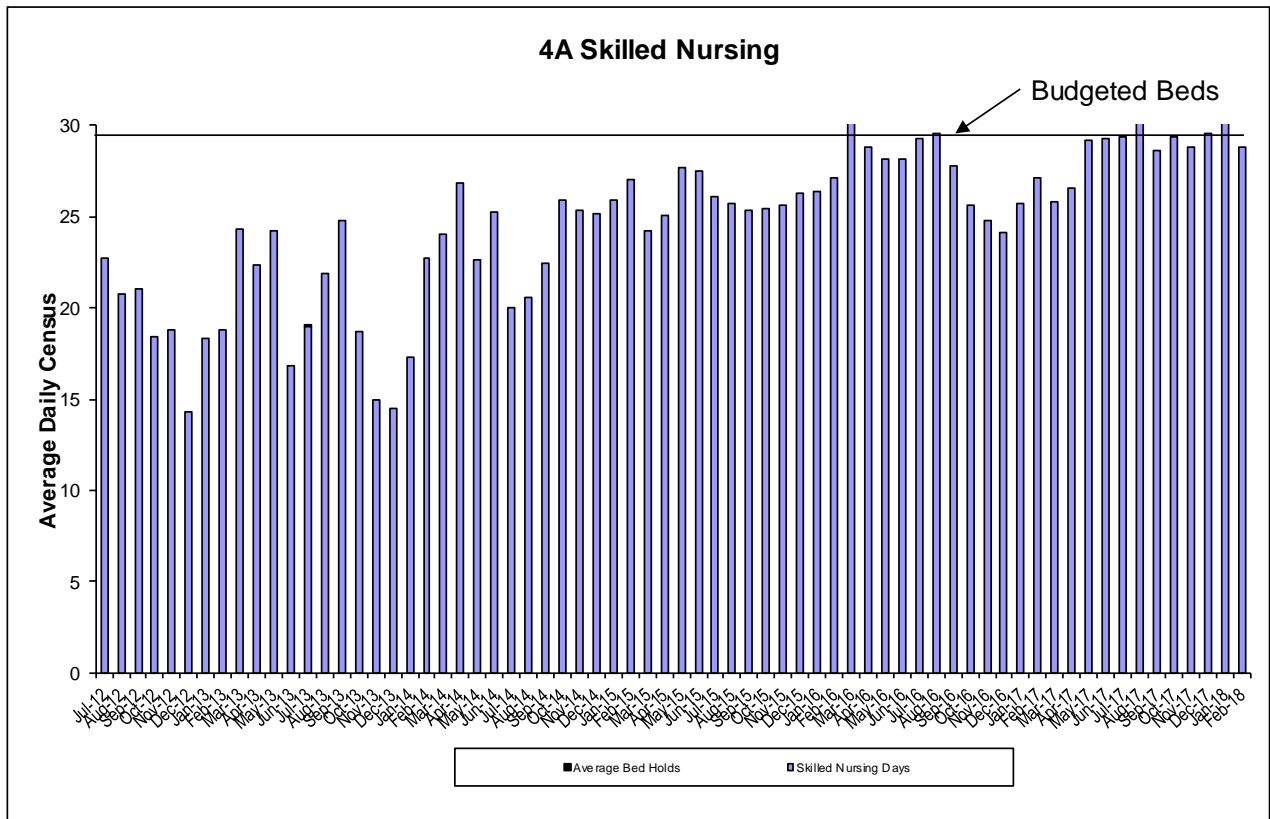
### Medical/Surgical



### Medical/Surgical







### Variance Between Salary Expenditure and Budget by Pay Period (PP) and Year To Date (YTD)

